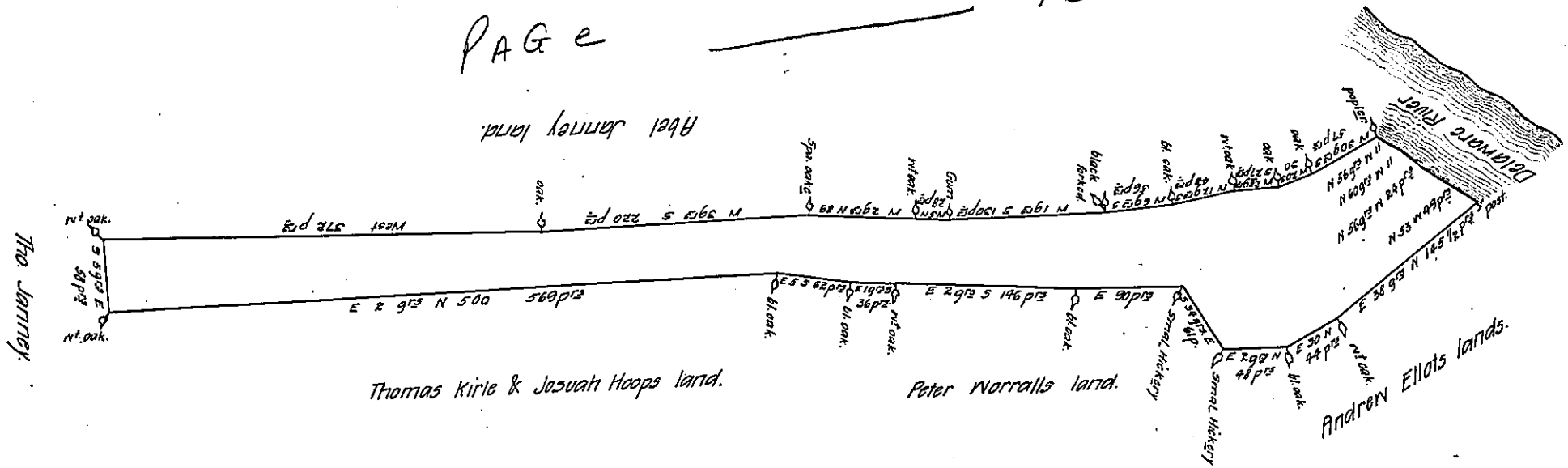


PAGE

13



According to a warrant to me directed by Edward Pennington Surveyor General of the Province of Pennsylvania & dated the 8th day of the 11th month 1700, two tracts of land lying & being in the county of Bucks & Province aforesaid which said tracts are contiguous and Begins at a poplar by the River Delaware being a corne of Abel Jarneys land Thence by the same west thirty deg^s south fifty seven perches to an oak Then west twelve deg^s south forty eight perches to a black oak Then west two deg^s south ^{twenty} seven perches to a white oak Then west six deg^s south fifty six perches to a forked black oak Then west 1 deg^s south one hundred and thirty perches to a gum Tree then Then west five deg^s north twenty eight perches to a white oak Then west two deg^s north eighty nine perches to a spanish oak Then west three deg^s south two hundred and twenty perches ^{at oak} Then west three hundred seventy two perches to a white oak being another corne of said Abel Jarneys land Then by Thomas Jarneys land south five deg^s east fifty eight perches to a corne white oak being a corne of Josuah Hoops land Then by the said Hoops and Thomas Kirles land east two deg^s north five hundred and sixty perches to a black oak Then east five deg^s south sixty two perches to a black oak ^{the corne of Peter Worralls land} Then east 1 deg^s south ^{by sd Worralls land} thirty six perches to a white oak Then east two degrees south one hundred forty six perches to a black oak Then east ninety perches to a small hickery standing in the Road that leads from the falls of Delaware to the plantations above being another corne of the said Worralls land Then down the said road south thirty four deg^s east sixty one ^{perches to} another smal hickery standing in the said road and in the line of Andrew Ellots land, Then by the said Ellots land east two deg^s north forty eight perches to a black oak Then east thirty deg^s north forty four perches to a white oak Then east thirty eight deg^s north one hundred forty five perches and a half to a post standing by the River Delaware Then up the Courses of the River north fifty three deg^s west forty nine perches then north fifty six deg^s west twenty four perches Then north sixty deg^s west eleven perches Then north fifty six deg^s west eleven perches to the poplar being the place of Beginning Containeing ~~and being~~ four hundred and sixteen acres & 135 perches. Resurveyed the 12th Feb^r 1701.

* Phineas Pemberton.

IN TESTIMONY that the above is a copy of the original remaining on file in the Department of Internal Affairs of Pennsylvania, made conformably to an Act of Assembly approved the 16th day of February, 1833, I have hereunto set my Hand and caused the Seal of said Department to be affixed at Harrisburg, this

eighteenth day of January 1911.

Henry Howard
Secretary of Internal Affairs.